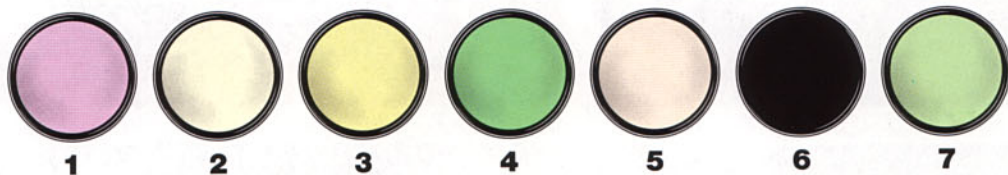


B+W Special Filters

21



1 B+W 499 F-Day

This light violet filter eliminates the unpleasant blue-green color tint produced by daylight films illuminated by fluorescent tubes. Filter factor is approx. 2.

2 B+W 415

(2B)

This colorless ultraviolet absorbing filter is used to eliminate haze from ultraviolet rays and possible fluorescence of the lens cement. Useful for high-altitude photography. Filter factor is approx. 1.

3 B+W 420

(2A)

Due to the slight yellow coloring of this filter, it is designed for aerial photography with black and white films. Filter factor is approx. 1.2.

4 B+W 470

This filter is used to differentiate reproductions of green tones in reproduction photography. It may also be used to create the effect of haze. Filter factor is approx. 2.

5 B+W 486, 486-W

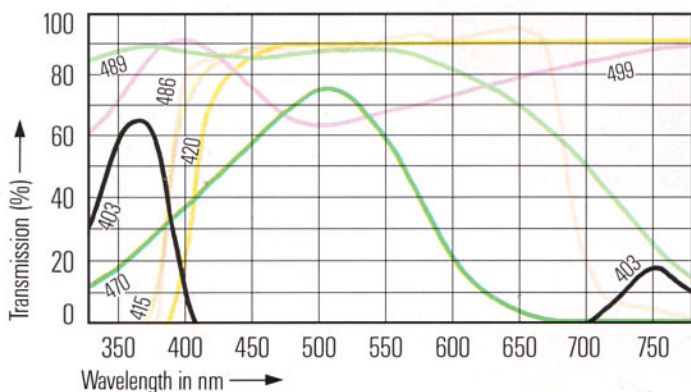
This UV/IR-cut interference filter completely blocks the often unwanted UV and IR radiation. It is especially recommended for CCD applications where digital image sensors have not been fitted with an IR protection filter. Further applications: video films, digital and conventional b/w or colour photography as well as technical applications. Warm tone-type with KR 1.5 as substrate glass. Order No. 486-W.

6 B+W 403

Although this dark violet filter transmits a small amount of visible light, it completely blocks wavelengths longer than 360 nm. Its application is in UV-reflection photography and for the front of UV emitting illumination in UV-fluorescent photography. Depending on the film, filter factor is 8 - 20.

7 B+W 489

This filter is frequently described as a heat absorbing filter because it lets the visible spectral range pass while the infrared rays from 780 nm are strongly blocked. It is often used to protect IR-sensitive CCD-sensors or in illumination systems.



The B+W special filters are strong absorbing filters for applications within defined wave length ranges when a standard filter will pass too much of one range of wave-length or not enough of another.

The specifications in brackets indicate the comparable KODAK Wratten filters.

Detailed information is contained in the transmission curve.

The following Schott absorbing filter glasses are available on request: BG 12, BG 23, BG 38, VG 5 and VG 9.

See pages 47 - 49 for available types and sizes.

Tips

A special filter does not have to be used exclusively for its intended application. Experimentation will reveal new uses and effects perhaps unforeseen by the photographer. Possibilities can be determined ahead of time with the aid of the transmission curves and experience in its effect on black and white and color films.